

System:

The 50 computers are set up in the exhibition space as illustrated in the diagram. Using special stands made for the computers, each is set up with the screen facing upward. The mouses and keyboards are not hooked up. The built-in microphones are used as input sources and the built-in monitors and speakers are used as output sources.

The power and Ethernet cables from each computer run vertically to the ceiling batten. Above the batten, power outlets providing electric power and hubs that form the Ethernet network are set up. By creating multiple links with an 8- or 16-port hub, it can be used as a single virtual hub.

The computers are set up with approximately two meters between them, and because the cables rise up toward the ceiling rather than run along the floor, visitors can move freely between the computers, look around them, or gaze at any one computer.

The host computer set up in the exhibition area is slightly separated from the 50 computers, but is also linked to the network. The host computer is used to distribute files to the other computers and adjust their actions, while also acting as the control panel in a performance.

Moreover, the number of computers can be decreased or increased from anywhere between 20 and 50.

Artists:

Carl Stone, Yasuhiro Otani, Masahiro Miwa, Nobuyasu Sakonda and Masayuki Akamatsu

Space Requirement:

18m X 12m

Technical Requirements:

50 iMac Computers, 50 Ports Ethernet Hub(s) and Cables
 Additional 1 Host computer(ex.PowerBook) and 1 more Port of Ethernet Hub and Cable

Credit:

Directed by Masayuki Akamatsu
 Assisted by Yuki Minamikata and Taisuke Murakami
 Supported by Apple Japan Inc., Yano Electric Co.,Ltd, MARS Ltd.,

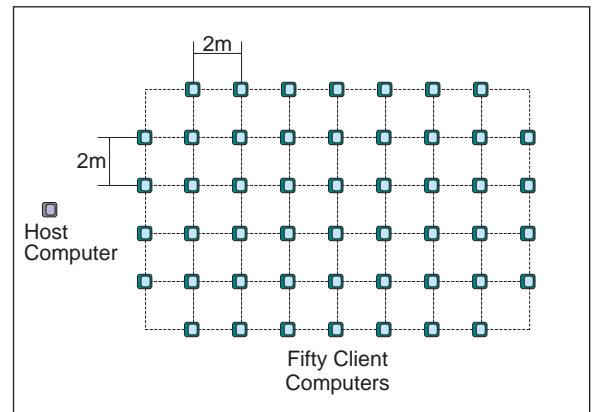


Fig 1. Floor Plan

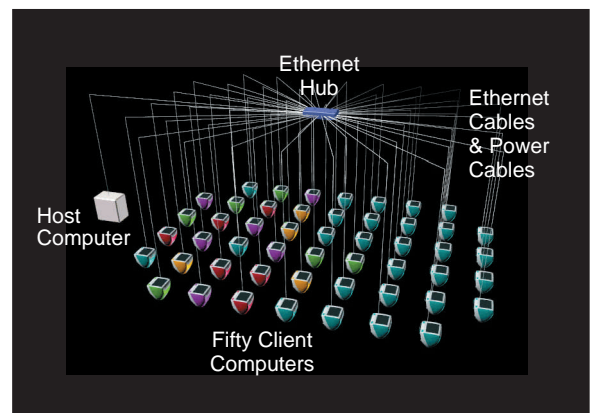


Fig 2. System Diagram